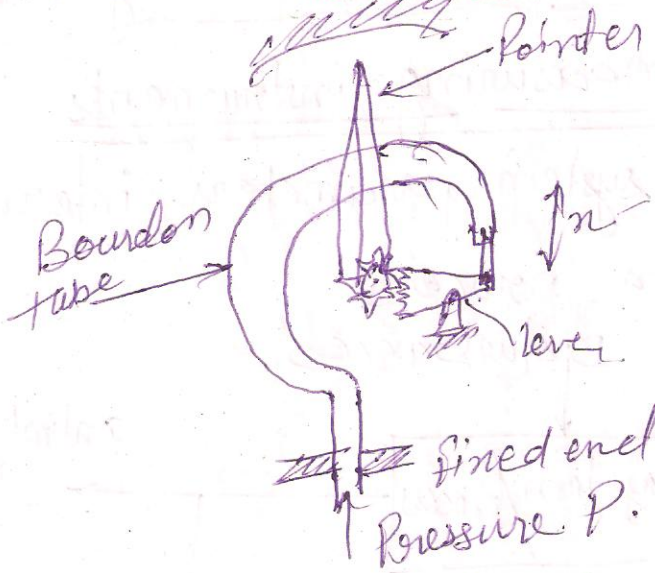


* Examples of Functional Elements :-

1. Bourdon Pressure Gauge



2. Pressure Gauge with electrical read out :-

3. Electro dynamic displacement measuring device
4. D'Arsonval type of galvanometer.

Fig of 3.

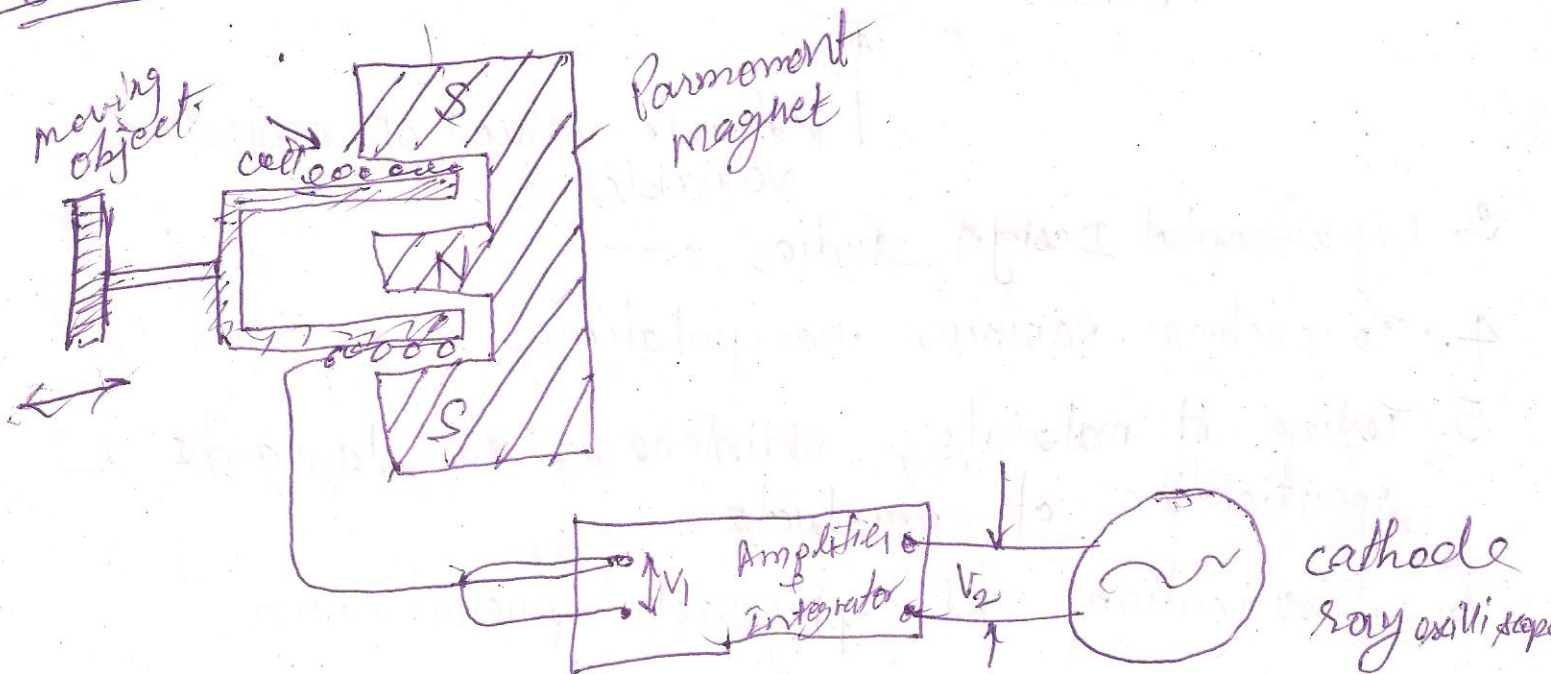
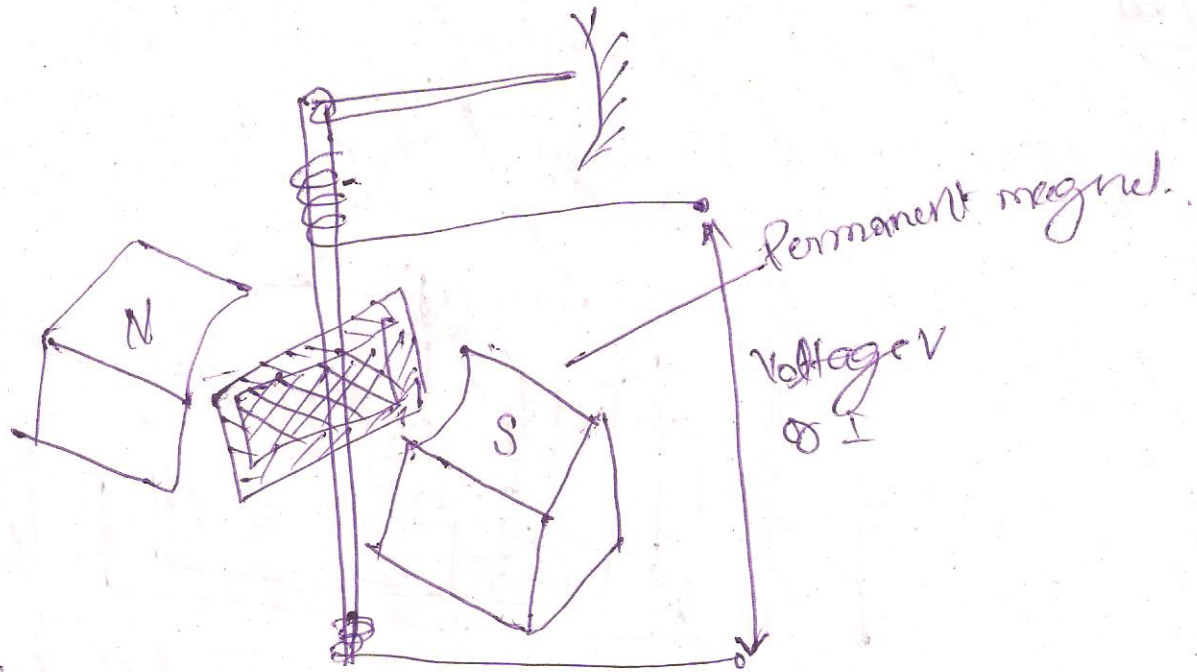
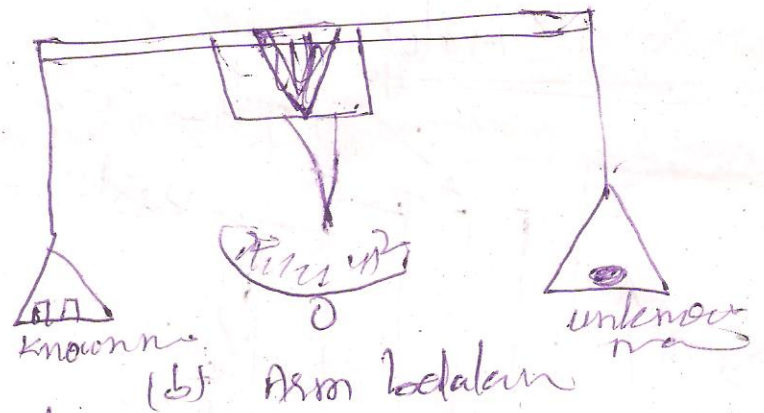
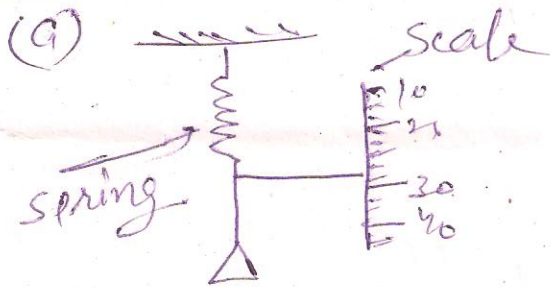


Fig. 4



* classification of measuring Instruments :-

(1) Deflection & Null type :-



(b) manually operated & Automatic

